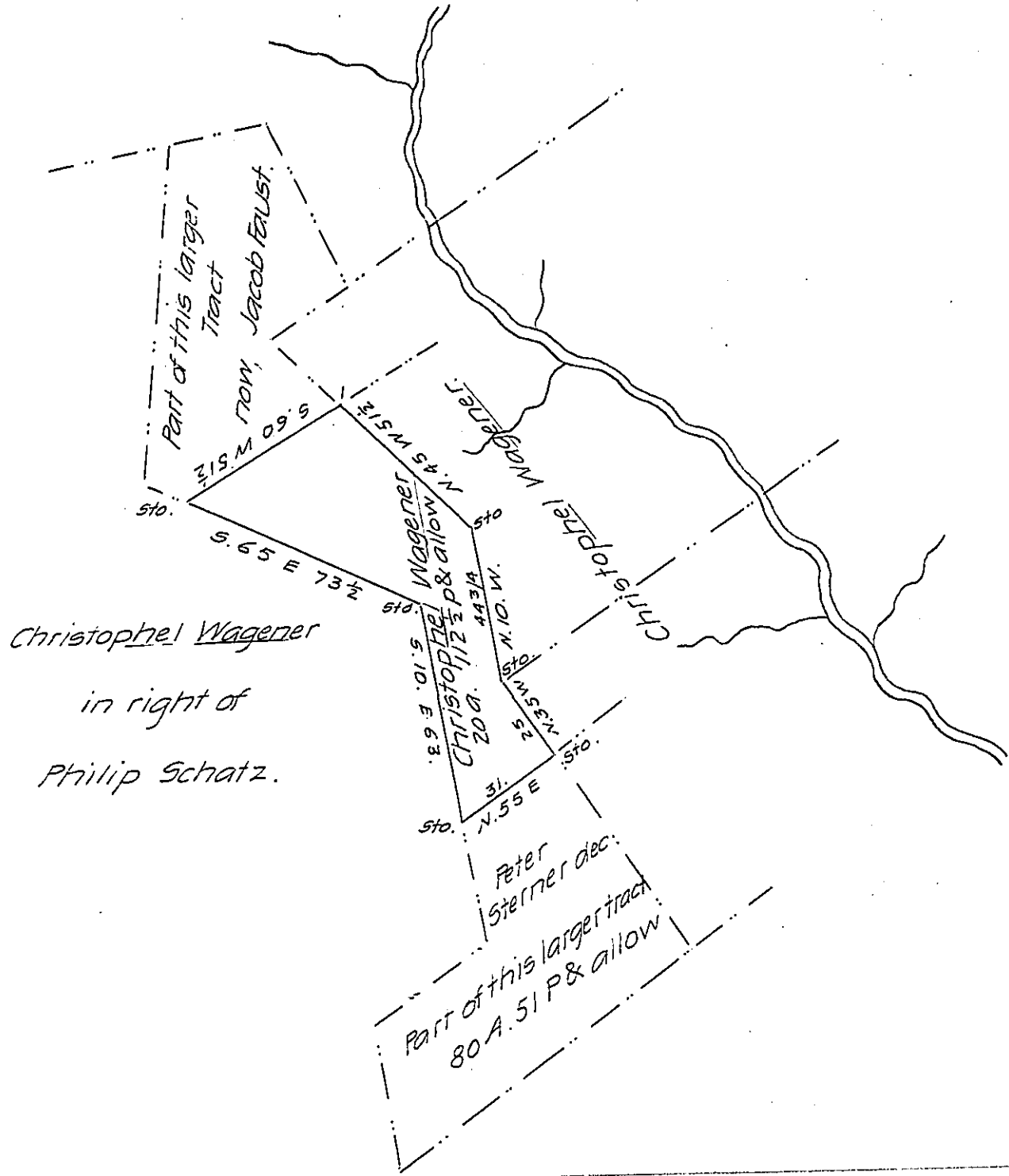


FORM NO. 1.



Situate in Brunswick township, Schuylkill county containing twenty acres and one hundred and twelve and a half perches and the allowance of six per cent (part of the same larger tract of 80 acs 51 ps & ca. which was originally surveyed to John Webb in pursuance of a warrant granted him dated the 7th day of February 1754) surveyed off for Christopher Wagner the 17th day of January 1830.

F. Lauderbrun

Dep. Sur. of Schuylkill

To Jacob Spangler Esquire  
Surveyor General.

IN TESTIMONY that the above is a copy of the original remaining on file in the Department of Internal Affairs of Pennsylvania, made conformably to an Act of Assembly approved the 16th day of February 1833, I have hereunto set my hand and caused the Seal of said Department to be affixed at Harrisburg, this ~~twenty seventh~~ day of June 1907

*Henry Howe*  
Secretary of Internal Affairs.